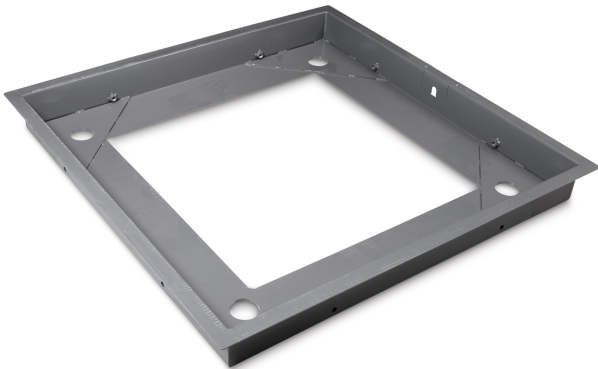


KERN BIC-A04

KERN

Stable pit frame, steel, powder coated, for models with weighing plate size W×D×H 1000×1000×108 mm



Category

Brand	KERN
Product category	Balance
Product group	Pit frame

Construction

Dimension (W×D×H)	1088×1088×110 mm
Dimension housing (W×D×H)	1088×1088×107 mm
Material	steel, powder-coated
Material	steel, powder-coated
Material load cell(s)	steel

Environmental conditions

Ambient temperature [Min]	-20 °C
Ambient temperature [Max]	60 °C

Packing & Shipping

Readability force [d] (N)	2 d
Dimensions packaging (W×D×H)	1110×1110×120 mm
Net weight	30 kg
Shipping method	Freight
Net weight approx.	30 kg
Gross weight approx.	34 kg
Shipping weight	34 kg

Pictograms

STANDARD

