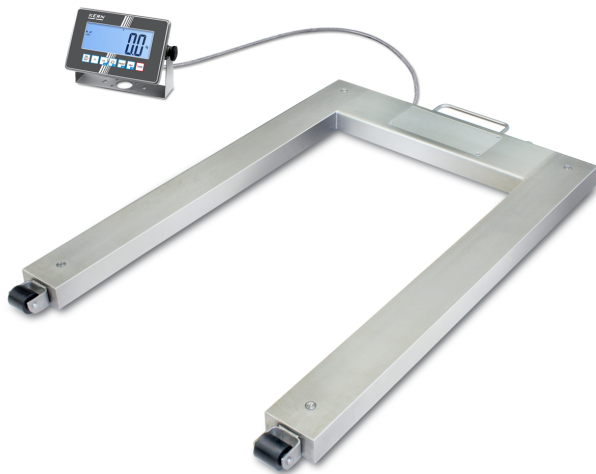


# KERN UXC 1.5T-4M

Pallet scale with stainless steel load support (IP67) and stainless steel display device (IP68), verification optional



## Display

|                                 |                            |
|---------------------------------|----------------------------|
| Display type                    | LCD                        |
| Display type                    | LCD with backlight         |
| Display backlight               | ✓                          |
| Display screen size             | 160×60 mm                  |
| Display segments                | 6                          |
| Display digit height            | 48 mm                      |
| Languages of the user interface | English<br>Symbol language |

## Construction

|                                      |                                      |
|--------------------------------------|--------------------------------------|
| Dimension display device (W×D×H)     | 232×150×77,3 mm                      |
| Dimensions weighing surface (W×D)    | 1190×840 mm                          |
| Dimensions weighing surface          | 1190×840 mm                          |
| Dimensions weighing platform (W×D×H) | 1361×840×80 mm                       |
| Material weighing plate              | stainless steel                      |
| Material platform                    | stainless steel                      |
| Material display housing             | stainless steel                      |
| Material load cell(s)                | alloyed steel                        |
| Level indicator                      | ✓                                    |
| Levelling feet adjustable            | ✓                                    |
| Stand rotatable                      | no                                   |
| Stand inclinable                     | no                                   |
| Wall mount                           | ✓                                    |
| Transport wheels                     | ✓                                    |
| Display device cable length          | 5 m                                  |
| Platform Construction                | Welded load plate;<br>smooth surface |
| Load cells - number                  | 4                                    |

## Functions

|   |                          |
|---|--------------------------|
| PreTare function  | ✓                        |
| Sum memory function                                       | ✓                        |
| Recipe/summing level                                      | Sum A                    |
| Percentage determination                                  | ✓                        |
| Tolerance weighing  | ✓                        |
| Tolerance weighing - type of signal                       | acoustically             |
| Alibi memory  | optional internal memory |
| Alibi memory - number of memory spaces                    | 250.000                  |
| Function for averaging under unstable weighing conditions | ✓                        |
| Counting function   | ✓                        |
| Counting resolution (laboratory conditions)               | 3.000                    |

## Category

|                  |                  |
|------------------|------------------|
| Brand            | KERN             |
| Product category | Industrial scale |
| Product group    | Pallet scale     |
| Product family   | UXC              |

## Measuring System

|  |                                |
|--|--------------------------------|
| Weighing system                          | Strain gauge                   |
| Number of weighing ranges                | 1                              |
| Weighing capacity [Max]                  | 1500 kg                        |
| Readability [d]                          | 0,5 kg                         |
| Reproducibility                          | 0,5 kg                         |
| Linearity                                | ± 0,5 kg                       |
| Minimum weight [Min]                     | 10 kg                          |
| Resolution                               | 3.000                          |
| Adjustment options                       | Adjusting with external weight |
| Recommended adjusting weight             | 1500 kg (M1)                   |
| Stabilization time                       | 3 s                            |
| Linearisation in dots                    | 2                              |
| Eccentric loading at 1/3 [Max]           | 0,5 kg                         |
| Units (if device is conformity assessed) | kg<br>g                        |
| Conformity assessment possible           | ✓                              |
| Construction type of the scale           | Single-range balance           |
| Units                                    | kg<br>g<br>ffa<br>PCS<br>%     |
| Load cell connection                     | 6-wire                         |
| Default unit                             | kg                             |
| Loadcell type                            | ZEMIC H8C 1 ton                |

# KERN UXC 1.5T-4M



Pallet scale with stainless steel load support (IP67) and stainless steel display device (IP68), verification optional

|   |   |
|---|---|
| Counting reference weight can be entered                          | ✓                                       |
| Smallest piece weight when piece counting - laboratory conditions | 500 g                                   |
| Smallest piece weight when piece counting - normal conditions     | 5 kg                                    |
| Reference quantity  | 5, 10, 20, 50, n (any number of pieces) |
| Hold function   | ✓                                       |
| IP protection - complete device                                   | -                                       |
| IP protection - display   | IP68                                    |
| IP protection - platform  | IP67                                    |
| IP protection - load cell   | IP67                                    |
| Auto-off interval(s) in battery mode/rechargeable battery mode    | 5 min                                   |
|   | 2 min                                   |
|   | 1 min                                   |
|   | 30 min                                  |
|   | 60 min                                  |
| Auto-off interval(s) in mains power mode                          | 30 sec                                  |
| Auto-off interval(s) in mains power mode                          | off                                     |
| Tare function   | manual (multi)                          |
| Number of keys for operation                                      | 7                                       |

## Interface

|            |  |   |
|------------|--|---|
| Interfaces | RS-232 (optional, factory)               |   |
|            | Ethernet (optional, factory)             |   |
|            | WiFi (optional, factory)                 |   |
|            | Alibi memory (optional, factory)         |   |
|            | analogue (0 - 10 V) (optional, factory)  |   |
|            | analogue (4 - 20 mA) (optional, factory) |   |
|            | Bluetooth BLE (v4.0) (optional, factory) |   |
|            | USB-Device (optional, factory)           |   |
|            | compatible with EasyTouch                | ✓ |

## Power Supply

|   |                       |
|---|-----------------------|
| Supplied power supply   | Power supply unit     |
| Power supply type   | Built-in power supply |
| Plug-in power supply / adapter for countries - included with the delivery | EURO                  |
| Input voltage power supply / power [Max]                                  | 110 V - 240 V AC      |
| Power supply cable removable  | fixed connection      |

|   |                                  |
|---|----------------------------------|
| Power socket for mains adapter                      | Cable permanently installed      |
| Battery / accumulator type                          | Li-Ion                           |
| Battery   | no battery                       |
| Rechargeable battery operating time - backlight on  | 11 h                             |
| Rechargeable battery operating time - backlight off | 22 h                             |
| Rechargeable battery charging time                  | 8 h                              |
| Rechargeable battery optional                       | Rchrg. battery optional - intern |

## Environmental conditions

|                               |        |
|-------------------------------|--------|
| Ambient temperature [Min]     | -10 °C |
| Ambient temperature [Max]     | 40 °C  |
| Humidity of environment [Min] | 0 %    |
| Humidity of environment [Max] | 80 %   |

## Approval

|   |        |
|---|--------|
| CE mark                                 | ✓      |
| Conformity assessment possible ex works | ✓      |
| Accuracy classe                         | III    |
| Verification scale interval [e]         | 0,5 kg |

## Services (optional)

|   |         |
|---|---------|
| Article number for adjustment at the location of installation | 961-250 |
| Article number for conformity assessment                      | 965-230 |
| Article number for DAkkS calibration                          | 963-130 |
| Article number for certificate of conformity                  | 969-517 |

## Packing & Shipping

|                              |                 |
|------------------------------|-----------------|
| Delivery time                | 2 d             |
| Dimensions packaging (W×D×H) | 1405×890×315 mm |
| Shipping method              | Freight         |
| Net weight approx.           | 55 kg           |
| Gross weight approx.         | 90 kg           |
| Shipping weight              | 88 kg           |

## Product information

|                      |                          |
|----------------------|--------------------------|
| GTIN/EAN number      | 4045761481565            |
| Trade number         | 84238220                 |
| REACH classification | no prohibited substances |

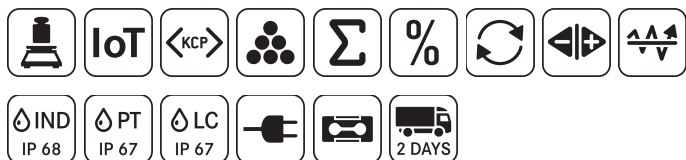
# KERN UXC 1.5T-4M



Pallet scale with stainless steel load support (IP67) and stainless steel display device (IP68), verification optional

## Pictograms

### STANDARD



### OPTION



### FACTORY

